



**LOFT**  
**iNCEK**

If you want to examine this  
catalogue in terms of  
investment, then turn it backwards. ▶



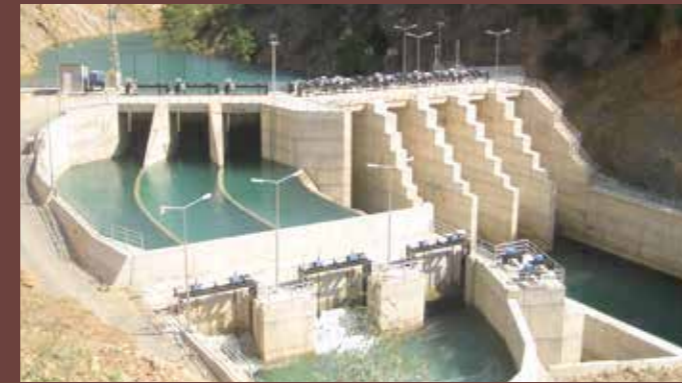
As profitable as enjoyable, as challenging as profitable,  
as big as challenging, as aesthetic as big.

**444 83 38**

[facebook.com/incekloft](https://facebook.com/incekloft)  
[twitter.com/incekloft](https://twitter.com/incekloft)  
[instagram.com/incekloft](https://instagram.com/incekloft)  
[youtube.com/incekloft](https://youtube.com/incekloft)  
[pinterest.com/incekloftakfen](https://pinterest.com/incekloftakfen)  
Web: [www.incekloft.com.tr](http://www.incekloft.com.tr)  
E-mail: [incekloft@akfen.com.tr](mailto:incekloft@akfen.com.tr)

"Akfen Insaat Turizm ve Tic. A.Ş. reserves the right to amend the plans and details, provided in Incek Loft catalogue, without serving any notice beforehand. In this catalogue, the architectural projects consist of a design for a construction to be built, and have been designed dedicatedly for this catalogue."

Hacilar mahallesi 986/1 sokak 1/1 Incek / Golbasi / ANKARA



And now we are working on a housing project, called **Incek Loft** in Incek Ankara, which is quite challenging for the district. This is the biggest project of Incek, which is situated on the development axis of Ankara. That's why we offer you not only a house but also a profitable investment opportunity. I invite every person to take advantage of this golden opportunity and hope that we will all meet in the future of Ankara pretty soon.

Hamdi Akin

We have carried out many infrastructure projects in Turkey since 1976. We have attained not only national but also international power by operating in such industrial fields as airports, marine transportation, water distribution, energy and real estate.



In Incek, where Ankara meets the nature, the project site, which was previously a quarry, becomes a prestigious center thanks to **Incek Loft**. In Incek Loft designed as a mixed project consisting mainly of houses, a contemporary neighborhood environment is created.

The buildings are connected to each other through the green landscapes and walking and recreation areas, and urban settlement is handled together with the nature in **Incek Loft**, carrying the conventional sense of neighborhood to the 21st century.

All units get together traversing towards the Lake Mogan on the land having a shape of a long and thin bow. All houses, together with its gardens and terraces, are positioned in a manner to benefit from the daylight and scenery optimally while protecting the privacy of each house.

The site arranged as outdoor, semi-outdoor and outdoor areas, and called as "shopping and walking valley" open to pedestrians at the street level aims to become a center through its tempting manner. This site has been formed as a live and protected urban meeting center tempting to get together through especially its cafes and restaurants and its natural streets in the form of a canyon.

The project, developed with due regard to the urban values and natural sources for both residents and visitors, offers you the best weather of Ankara.



# Where is Incek Loft?

Incek Loft is in the new life center of Ankara! It is situated on a field of 108.000 m<sup>2</sup> with a view of Lake Mogan in Incek, where it is anticipated that the real estate prices will show an increase fairly above the average prices in time.



# Site Plan of Incek Loft

Incek Loft is in the new life center of Ankara! It is situated on a field of 108.000 m<sup>2</sup> with a view of Lake Mogan in Incek, where it is anticipated that the real estate prices will show an increase fairly above the average prices in time.





**LOFT**  
İNCEK



## Rest assured.

Rest assured in Incek Loft equipped with card entrance system. You are safe on 7/24 basis through the closed circuit camera system and professional security staff.



## Park safely.

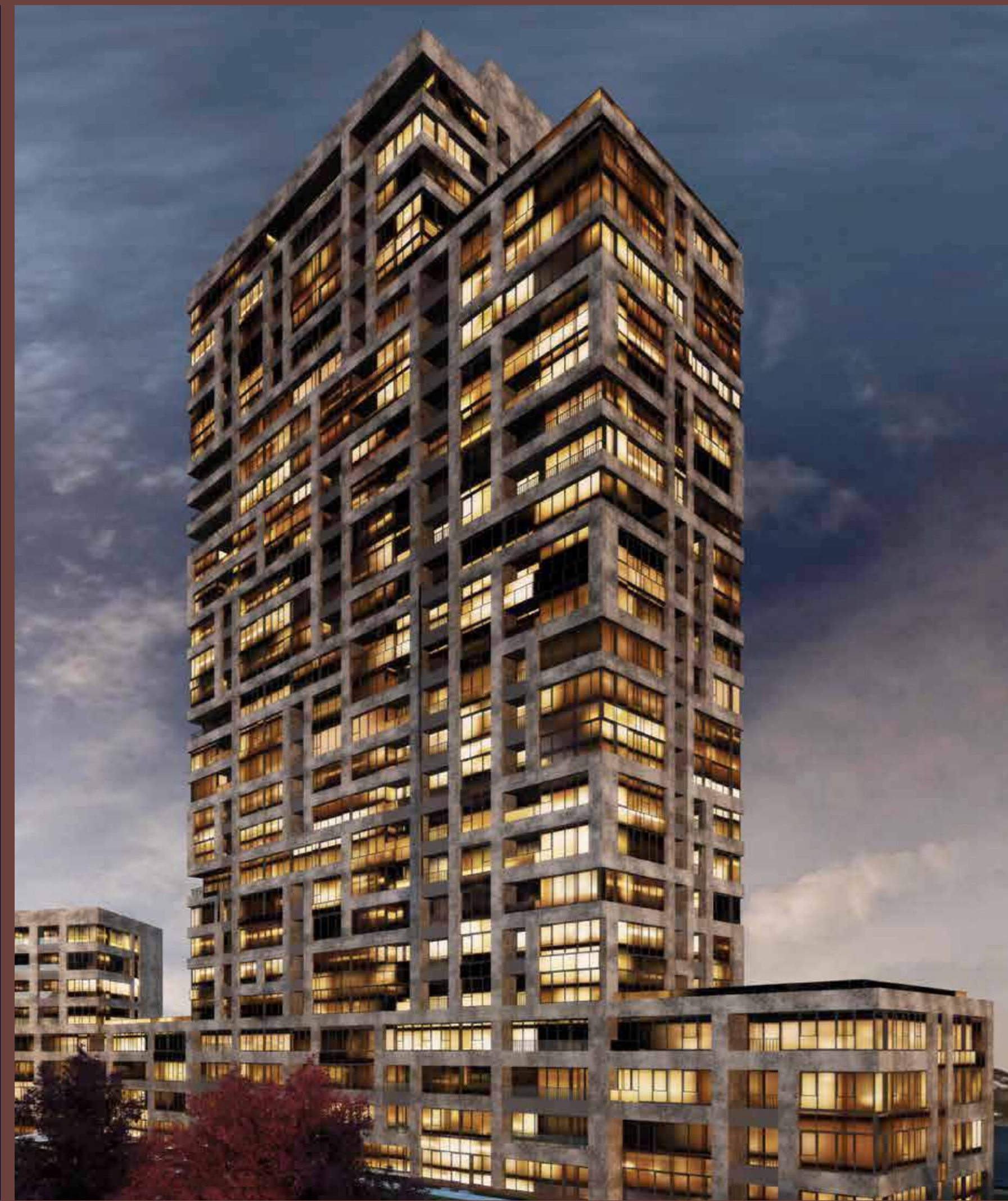
A dedicated parking garage is available for each flat in Incek Loft. Moreover, the vehicles get direct access to the parking garage. Thus, vehicle access to the social life areas available inside the site is prevented. A parking garage of 160 vehicles is available off the site for your visitors.





## Plans of Housing Types

Incek Loft consists of 1,199 houses, namely High Houses, Ankara Houses and Terrace Houses.



## High Houses

Take a look at Ankara from the height.  
It consists of a total of 6 high blocks of  
20 and 30 storey buildings.



## YA1A 1+1



1 Entrance Hall	5.2 m <sup>2</sup>
2 Kitchen	6.4 m <sup>2</sup>
3 Saloon	17.4 m <sup>2</sup>
4 Bedroom	9.8 m <sup>2</sup>
5 Dressing Room	3.7 m <sup>2</sup>
6 Bathroom	5 m <sup>2</sup>
7 Balcony	2.6 m <sup>2</sup>

Net Indoor Area 47.5 m<sup>2</sup>  
Net Balcony Area 2.6 m<sup>2</sup>

**Net Area of Usage 50.1 m<sup>2</sup>**

## YA2A 1+1



1 Entrance Hall	4 m <sup>2</sup>
2 Kitchen	8 m <sup>2</sup>
3 Saloon	16.4 m <sup>2</sup>
4 Bedroom	9.4 m <sup>2</sup>
5 Dressing Room	3.9 m <sup>2</sup>
6 Bathroom	6.2 m <sup>2</sup>

Net Indoor Area 47.9 m<sup>2</sup>

**Net Area of Usage 47.9 m<sup>2</sup>**

## YA3B 1+1



1 Entrance Hall	5.2 m <sup>2</sup>
2 Kitchen	8.7 m <sup>2</sup>
3 Saloon	17.9 m <sup>2</sup>
4 Bedroom	10.2 m <sup>2</sup>
5 Dressing Room	3.7 m <sup>2</sup>
6 Bathroom	5 m <sup>2</sup>
7 Balcony	3.2 m <sup>2</sup>

Net Indoor Area	50.7 m <sup>2</sup>
Net Balcony Area	3.2 m <sup>2</sup>

**Net Area of Usage 53.9 m<sup>2</sup>**

## YB1A 2+1



1 Entrance Hall	4.9 m <sup>2</sup>
2 Cloakroom	1.1 m <sup>2</sup>
3 Kitchen	8.9 m <sup>2</sup>
4 Saloon	20.9 m <sup>2</sup>
5 Bedroom	9.9 m <sup>2</sup>
6 Parents' Bedroom	14.4 m <sup>2</sup>
7 Dressing Room	5.1 m <sup>2</sup>
8 Parents' Bathroom	4.8 m <sup>2</sup>
9 Bathroom	4.7 m <sup>2</sup>
10 Hallway	3.5 m <sup>2</sup>
11 Balcony	3.2 m <sup>2</sup>

Net Indoor Area	78.2 m <sup>2</sup>
Net Balcony Area	3.2 m <sup>2</sup>

**Net Area of Usage 81.4 m<sup>2</sup>**

## YB2A 2+1



1 Entrance Hall	4.9 m <sup>2</sup>
2 Cloakroom	1.6 m <sup>2</sup>
3 Kitchen	8.9 m <sup>2</sup>
4 Saloon	20.8 m <sup>2</sup>
5 Bedroom	10.0 m <sup>2</sup>
6 Parents' Bedroom	14.4 m <sup>2</sup>
7 Dressing Room	5.1 m <sup>2</sup>
8 Parents' Bathroom	4.8 m <sup>2</sup>
9 Bathroom	4.7 m <sup>2</sup>
10 Hallway	3.8 m <sup>2</sup>
11 Balcony	3.2 m <sup>2</sup>

Net Indoor Area	79 m <sup>2</sup>
Net Balcony Area	3.2 m <sup>2</sup>

**Net Area of Usage 82.2 m<sup>2</sup>**

## YB2C 2+1



1 Entrance Hall	4.9 m <sup>2</sup>
2 Cloakroom	1.1 m <sup>2</sup>
3 Kitchen	9 m <sup>2</sup>
4 Saloon	20.3 m <sup>2</sup>
5 Bedroom	9.9 m <sup>2</sup>
6 Parents' Bedroom	12.1 m <sup>2</sup>
7 Dressing Room	5.1 m <sup>2</sup>
8 Parents' Bathroom	4.8 m <sup>2</sup>
9 Bathroom	4.7 m <sup>2</sup>
10 Hallway	3.5 m <sup>2</sup>
11 Balcony	3.2 m <sup>2</sup>
12 Balcony	1.6 m <sup>2</sup>

Net Indoor Area	75.4 m <sup>2</sup>
Net Balcony Area	4.8 m <sup>2</sup>

**Net Area of Usage 80.2 m<sup>2</sup>**

## YBD8A 2+1 (DUBLEX)



1 Entrance Hall	5 m <sup>2</sup>
2 Wc	2.3 m <sup>2</sup>
3 Kitchen	9.3 m <sup>2</sup>
4 Saloon	27.8 m <sup>2</sup>
5 Utility Room	1.4 m <sup>2</sup>
6 Hallway	6 m <sup>2</sup>
7 Bathroom	5.2 m <sup>2</sup>
8 Parents' Bedroom	16 m <sup>2</sup>
9 Bedroom	14.3 m <sup>2</sup>

Net Indoor Area 87.3 m<sup>2</sup>

**Net Area of Usage 87.3 m<sup>2</sup>**

Garden 47.2 m<sup>2</sup>

## YC1A 3+1



1 Entrance Hall	4.8 m <sup>2</sup>
2 Kitchen	8.6 m <sup>2</sup>
3 Saloon	26.6 m <sup>2</sup>
4 Bedroom	9.6 m <sup>2</sup>
5 Bedroom	11.9 m <sup>2</sup>
6 Parents' Bedroom	13.3 m <sup>2</sup>
7 Dressing Room	5.6 m <sup>2</sup>
8 Parents' Bathroom	4.8 m <sup>2</sup>
9 Bathroom	4.7 m <sup>2</sup>
10 Utility Room	1.8 m <sup>2</sup>
11 Cloakroom	2.3 m <sup>2</sup>
12 Hallway	5.4 m <sup>2</sup>
13 Balcony	1.4 m <sup>2</sup>

Net Indoor Area 99.4 m<sup>2</sup>

Net Balcony Area 1.4 m<sup>2</sup>

**Net Area of Usage 100.8 m<sup>2</sup>**

## YC2A 3+1



1 Entrance Hall	4.5 m <sup>2</sup>
2 Kitchen	9.6 m <sup>2</sup>
3 Saloon	26.9 m <sup>2</sup>
4 Bedroom	9.3 m <sup>2</sup>
5 Bedroom	14.1 m <sup>2</sup>
6 Parents' Bedroom	16.3 m <sup>2</sup>
7 Dressing Room	6.2 m <sup>2</sup>
8 Parents' Bathroom	5.2 m <sup>2</sup>
9 Bathroom	4.7 m <sup>2</sup>
10 Utility Room	3.7 m <sup>2</sup>
11 Hallway	6.8 m <sup>2</sup>
12 Balcony	3.2 m <sup>2</sup>

Net Indoor Area 107.3 m<sup>2</sup>  
Net Balcony Area 3.2 m<sup>2</sup>

**Net Area of Usage 110.5 m<sup>2</sup>**

## YC2F 3+1



1 Entrance Hall	4.5 m <sup>2</sup>
2 Kitchen	10 m <sup>2</sup>
3 Saloon	26.9 m <sup>2</sup>
4 Bedroom	9.3 m <sup>2</sup>
5 Bedroom	14.1 m <sup>2</sup>
6 Parents' Bedroom	14.2 m <sup>2</sup>
7 Dressing Room	6.2 m <sup>2</sup>
8 Parents' Bathroom	5.2 m <sup>2</sup>
9 Bathroom	4.7 m <sup>2</sup>
10 Utility Room	3.7 m <sup>2</sup>
11 Hallway	6.9 m <sup>2</sup>
12 Balcony	3.2 m <sup>2</sup>
13 Balcony	1.6 m <sup>2</sup>

Net Indoor Area 105.7 m<sup>2</sup>  
Net Balcony Area 4.8 m<sup>2</sup>

**Net Area of Usage 110.5 m<sup>2</sup>**

## YC4A 3+1

1 Entrance Hall	5.4 m <sup>2</sup>
2 Cloakroom	4 m <sup>2</sup>
3 Kitchen	11.9 m <sup>2</sup>
4 Saloon	35.4 m <sup>2</sup>
5 Bedroom	9.8 m <sup>2</sup>
6 Bedroom	10.6 m <sup>2</sup>
7 Parents' Bedroom	15.2 m <sup>2</sup>
8 Dressing Room	6 m <sup>2</sup>
9 Parents' Bathroom	6.8 m <sup>2</sup>
10 Bathroom	5.7 m <sup>2</sup>
11 Utility Room	1 m <sup>2</sup>
12 Hallway	6.7 m <sup>2</sup>
13 Balcony	5.2 m <sup>2</sup>

Net Indoor Area 118.5 m<sup>2</sup>  
Net Balcony Area 5.2 m<sup>2</sup>

**Net Area of Usage 123.7 m<sup>2</sup>**



## YC\*8A 3.5+1

1 Entrance Hall	7.5 m <sup>2</sup>
2 Kitchen	11.8 m <sup>2</sup>
3 Saloon	32.3 m <sup>2</sup>
4 Bedroom	16 m <sup>2</sup>
5 Bedroom	16 m <sup>2</sup>
6 Parents' Bedroom	15.6 m <sup>2</sup>
7 Dressing Room	5.1 m <sup>2</sup>
8 Parents' Bathroom	4.8 m <sup>2</sup>
9 Bathroom	4.7 m <sup>2</sup>
10 Helpmate's Room	6 m <sup>2</sup>
11 WC	2.4 m <sup>2</sup>
12 Hallway	8.9 m <sup>2</sup>
13 Balcony	2.2 m <sup>2</sup>
14 Balcony	4.1 m <sup>2</sup>

Net Indoor Area 131.1 m<sup>2</sup>  
Net Balcony Area 6.3 m<sup>2</sup>

**Net Area of Usage 137.4 m<sup>2</sup>**





## YC\*10A 3.5+1

1 Entrance Hall	8.2 m <sup>2</sup>
2 Saloon	53.8 m <sup>2</sup>
3 Kitchen	15.9 m <sup>2</sup>
4 Bedroom	15 m <sup>2</sup>
5 Bedroom	13.8 m <sup>2</sup>
6 Parents' Bedroom	17.3 m <sup>2</sup>
7 Dressing Room	7.7 m <sup>2</sup>
8 Parents' Bathroom	7.2 m <sup>2</sup>
9 Helpmate's Room	6.9 m <sup>2</sup>
10 Bathroom	4.7 m <sup>2</sup>
11 WC	2.7 m <sup>2</sup>
12 Hallway	8.8 m <sup>2</sup>
13 Balcony	9.5 m <sup>2</sup>

Net Indoor Area 162 m<sup>2</sup>  
Net Balcony Area 9.5 m<sup>2</sup>

**Net Area of Usage 171.5 m<sup>2</sup>**



## YD5A 4+1

1 Entrance Hall	6.6 m <sup>2</sup>
2 Saloon	61.1 m <sup>2</sup>
3 Kitchen	20.8 m <sup>2</sup>
4 Dressing Room	6.6 m <sup>2</sup>
5 Bedroom	14.7 m <sup>2</sup>
6 Bedroom	12.4 m <sup>2</sup>
7 Bedroom	11.2 m <sup>2</sup>
8 Parents' Bedroom	15.1 m <sup>2</sup>
9 Dressing Room	4.4 m <sup>2</sup>
10 Parents' Bathroom	7 m <sup>2</sup>
11 Bathroom	4.7 m <sup>2</sup>
12 WC	2.3 m <sup>2</sup>
13 Linen Closet	1.1 m <sup>2</sup>
14 Hallway	8.8 m <sup>2</sup>
15 Hallway	3.2 m <sup>2</sup>

Net Indoor Area 180 m<sup>2</sup>

**Net Area of Usage 180 m<sup>2</sup>**

Garden 221 m<sup>2</sup>



# Ankara Houses

Gaziosmanpasa houses of Ankara  
are now in Incek!

11 blocks of 4 and 7 storey buildings



## AB\*1F 2.5+1



1 Entrance Hall	2.51 m <sup>2</sup>
2 Kitchen	8.96 m <sup>2</sup>
3 Saloon	28.00 m <sup>2</sup>
4 Bedroom	10.06 m <sup>2</sup>
5 Parents' Bedroom	16.50 m <sup>2</sup>
6 Parents' Bathroom	5.65 m <sup>2</sup>
7 Bathroom	4.92 m <sup>2</sup>
8 Cloakroom/Utility Room	3.45 m <sup>2</sup>
9 Studio	4.60 m <sup>2</sup>
10 Hallway	10.46 m <sup>2</sup>

Net Indoor Area 95.11 m<sup>2</sup>

**Net Area of Usage 95.11 m<sup>2</sup>**

Garden 82.16 m<sup>2</sup>

## AC\*1B 3.5+1



1 Entrance Hall	4.81 m <sup>2</sup>
2 Kitchen	11.87 m <sup>2</sup>
3 Saloon	34.14 m <sup>2</sup>
4 Bedroom	10.84 m <sup>2</sup>
5 Bedroom	10.84 m <sup>2</sup>
6 Parents' Bedroom	17.81 m <sup>2</sup>
7 Parents' Dressing Room	6.58 m <sup>2</sup>
8 Parents' Bathroom	4.97 m <sup>2</sup>
9 Babysitter's/Caretaker's Room	6.95 m <sup>2</sup>
10 Bathroom	6.30 m <sup>2</sup>
11 WC	2.30 m <sup>2</sup>
12 Cloakroom	1.97 m <sup>2</sup>
13 Hallway	10.16 m <sup>2</sup>
14 Balcony	10.60 m <sup>2</sup>

Net Indoor Area 129.54 m<sup>2</sup>

Net Terrace/Balcony Area 10.60 m<sup>2</sup>

**Net Area of Usage 140.14 m<sup>2</sup>**



## Terrace Houses

You will be fully satisfied with green.

It consists of a total of 7 high blocks of 6 and 9 storey buildings.

## YA5B 1+1



1 Entrance Hall	5.7 m <sup>2</sup>
2 Kitchen	7.1 m <sup>2</sup>
3 Saloon	24.5 m <sup>2</sup>
4 Bedroom	12.2 m <sup>2</sup>
5 Dressing Room	4.3 m <sup>2</sup>
6 Bathroom	6.2 m <sup>2</sup>
7 Balcony	2.6 m <sup>2</sup>

Net Indoor Area 60.1 m<sup>2</sup>  
Net Balcony Area 2.8 m<sup>2</sup>

**Net Area of Usage 62.9 m<sup>2</sup>**

## YCD12D 3+1 (GARDEN DUBLEX)



1 Entrance Hall, Cloakroom	4.2 m <sup>2</sup>
2 Saloon	24 m <sup>2</sup>
3 Kitchen	11.2 m <sup>2</sup>
4 Work Room	10 m <sup>2</sup>
5 Utility Room	1.7 m <sup>2</sup>
6 Hallway	5.5 m <sup>2</sup>
7 Bedroom	15.3 m <sup>2</sup>
8 Parents' Bedroom	19.2 m <sup>2</sup>
9 Bathroom	4.2 m <sup>2</sup>
10 Bathroom	4.3 m <sup>2</sup>

Net Indoor Area 99.9 m<sup>2</sup>

**Net Area of Usage 99.9 m<sup>2</sup>**

Garden 85 m<sup>2</sup>

## YD2B 4+1

1 Entrance Hall	4.8 m <sup>2</sup>
2 Cloakroom/Studio	4.3 m <sup>2</sup>
3 Kitchen	12.6 m <sup>2</sup>
4 Saloon	36.6 m <sup>2</sup>
5 Bedroom	9.9 m <sup>2</sup>
6 Bedroom	11 m <sup>2</sup>
7 Bedroom	12.7 m <sup>2</sup>
8 Parents' Bedroom	14.8 m <sup>2</sup>
9 Bathroom	5.2 m <sup>2</sup>
10 Bathroom	5.7 m <sup>2</sup>
11 Hallway	8.5 m <sup>2</sup>
12 Balcony	5.2 m <sup>2</sup>

Net Indoor Area 126.1 m<sup>2</sup>  
Net Balcony Area 5.2 m<sup>2</sup>

**Net Area of Usage 131.3 m<sup>2</sup>**



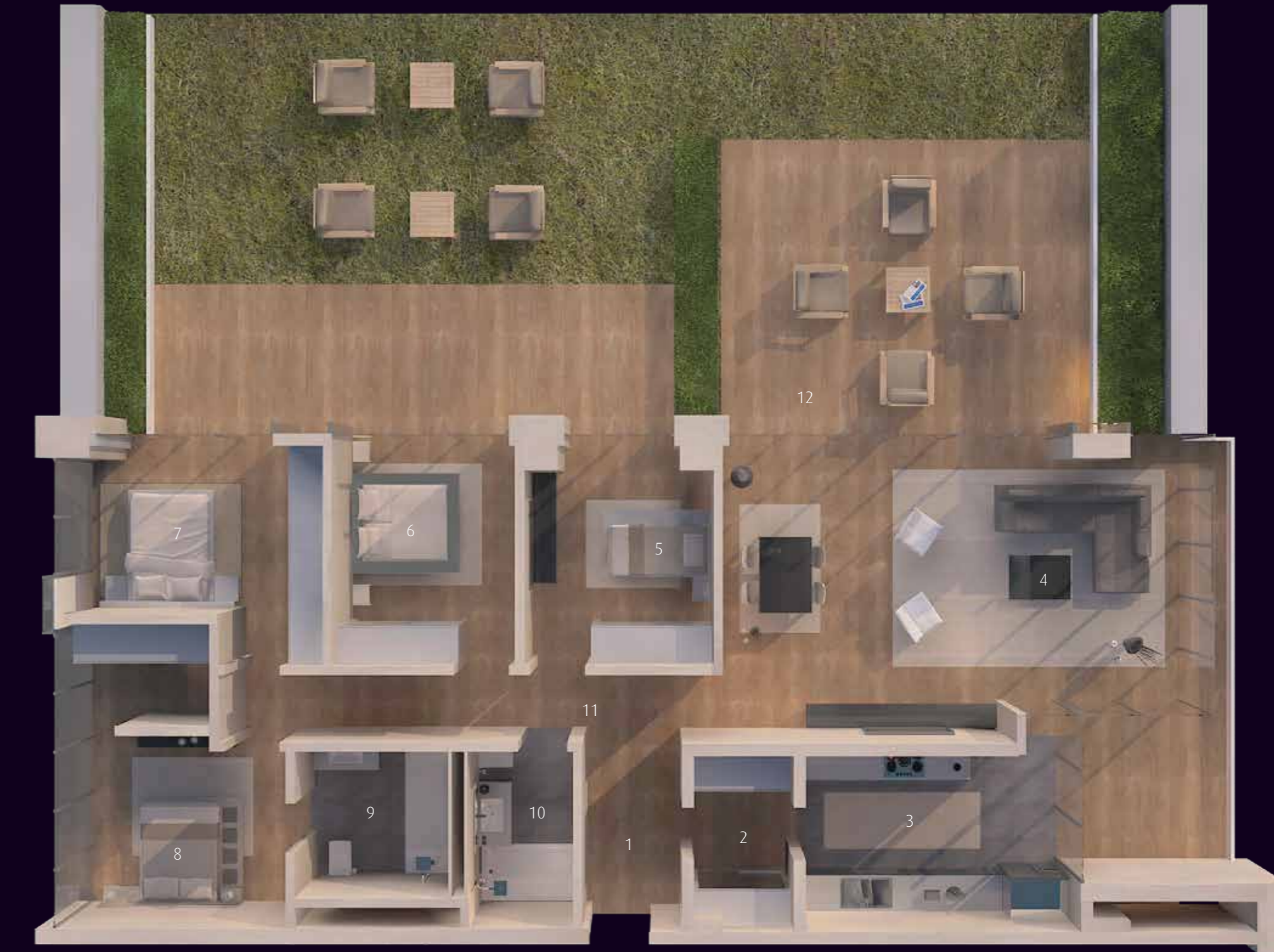
## YD3A 4+1

1 Entrance Hall	4.8 m <sup>2</sup>
2 Cloakroom/Studio	4.3 m <sup>2</sup>
3 Kitchen	12.6 m <sup>2</sup>
4 Saloon	36.6 m <sup>2</sup>
5 Bedroom	9.9 m <sup>2</sup>
6 Bedroom	11 m <sup>2</sup>
7 Bedroom	12.7 m <sup>2</sup>
8 Parents' Bedroom	14.8 m <sup>2</sup>
9 Bathroom	5.2 m <sup>2</sup>
10 Bathroom	5.7 m <sup>2</sup>
11 Hallway	8.5 m <sup>2</sup>
12 Balcony	10.8 m <sup>2</sup>

Net Indoor Area 127.2 m<sup>2</sup>  
Net Balcony Area 10.7 m<sup>2</sup>

**Net Area of Usage 137.9 m<sup>2</sup>**

Roof Terrace Area 116.2 m<sup>2</sup>



## YB\*10A 2.5+1

1 Entrance Hall	7.5 m <sup>2</sup>	Net Indoor Area	125.6 m <sup>2</sup>
2 Cloakroom/Utility Room	3.8 m <sup>2</sup>	<b>Net Area of Usage</b>	<b>125.6 m<sup>2</sup></b>
3 Kitchen	15.1 m <sup>2</sup>		
4 Saloon	38.4 m <sup>2</sup>	Garden	89.5 m <sup>2</sup>
5 Hobby Room	10.2 m <sup>2</sup>		
6 Parents' Bathroom	6.2 m <sup>2</sup>		
7 Parents' Bedroom	20.2 m <sup>2</sup>		
8 Bedroom	14.3 m <sup>2</sup>		
9 Bathroom	5.1 m <sup>2</sup>		
10 Hallway	4.6 m <sup>2</sup>		



## YB\*10B 2.5+1

1 Entrance Hall	7.5 m <sup>2</sup>	Net Indoor Area	119.4 m <sup>2</sup>
2 Cloakroom/Utility Room	3.8 m <sup>2</sup>	Net Balcony Area	3.8 m <sup>2</sup>
3 Kitchen	13.3 m <sup>2</sup>	<b>Net Area of Usage</b>	<b>123.2 m<sup>2</sup></b>
4 Saloon	34.7 m <sup>2</sup>		
5 Hobby Room	10.2 m <sup>2</sup>		
6 Parents' Bathroom	6.4 m <sup>2</sup>		
7 Parents' Bedroom	19.8 m <sup>2</sup>		
8 Bedroom	14 m <sup>2</sup>		
9 Bathroom	5.1 m <sup>2</sup>		
10 Hallway	4.6 m <sup>2</sup>		
11 Balcony	3.8 m <sup>2</sup>		



# YE4B 5+1



1 Entrance Hall	5.5 m <sup>2</sup>
2 Saloon	48.1 m <sup>2</sup>
3 Kitchen	19.3 m <sup>2</sup>
4 Bathroom	6.3 m <sup>2</sup>
5 Helpmate's Room	8.9 m <sup>2</sup>
6 Parents' Bathroom	6 m <sup>2</sup>
7 Dressing Room	3.9 m <sup>2</sup>
8 Parents' Bedroom	14.1 m <sup>2</sup>
9 Bedroom	14 m <sup>2</sup>
10 Bedroom	14.4 m <sup>2</sup>
11 Bedroom	13.3 m <sup>2</sup>
12 WC	4.8 m <sup>2</sup>
13 WC	2.8 m <sup>2</sup>
14 Hallway	15.7 m <sup>2</sup>
15 Balcony	3.2 m <sup>2</sup>
16 Balcony	8.32 m <sup>2</sup>

Net Indoor Area 177.1 m<sup>2</sup>  
 Net Balcony Area 11.5 m<sup>2</sup>

**Net Area of Usage 188.6 m<sup>2</sup>**







As profitable as enjoyable, as challenging as profitable,  
as big as challenging, as aesthetic as big.

**444 83 38**

[facebook.com/incekloft](https://facebook.com/incekloft)  
[twitter.com/incekloft](https://twitter.com/incekloft)  
[instagram.com/incekloft](https://instagram.com/incekloft)  
[youtube.com/incekloft](https://youtube.com/incekloft)  
[pinterest.com/incekloftakfen](https://pinterest.com/incekloftakfen)  
Web: [www.incekloft.com.tr](http://www.incekloft.com.tr)  
E-mail: [incekloft@akfen.com.tr](mailto:incekloft@akfen.com.tr)

"Akfen Insaat Turizm ve Tic. A.Ş. reserves the right to amend the plans and details, provided in Incek Loft catalogue, without serving any notice beforehand. In this catalogue, the architectural projects consist of a design for a construction to be built, and have been designed dedicatedly for this catalogue."

Hacilar mahallesi 986/1 sokak 1/1 Incek / Golbasi / ANKARA



**LOFT**  
İNCEK



INDOOR SWIMMING POOL

## Swimming pool fun in summer and winter...

Swimming pool fun is waiting for you even in winter with clean changing rooms and shower cabins.

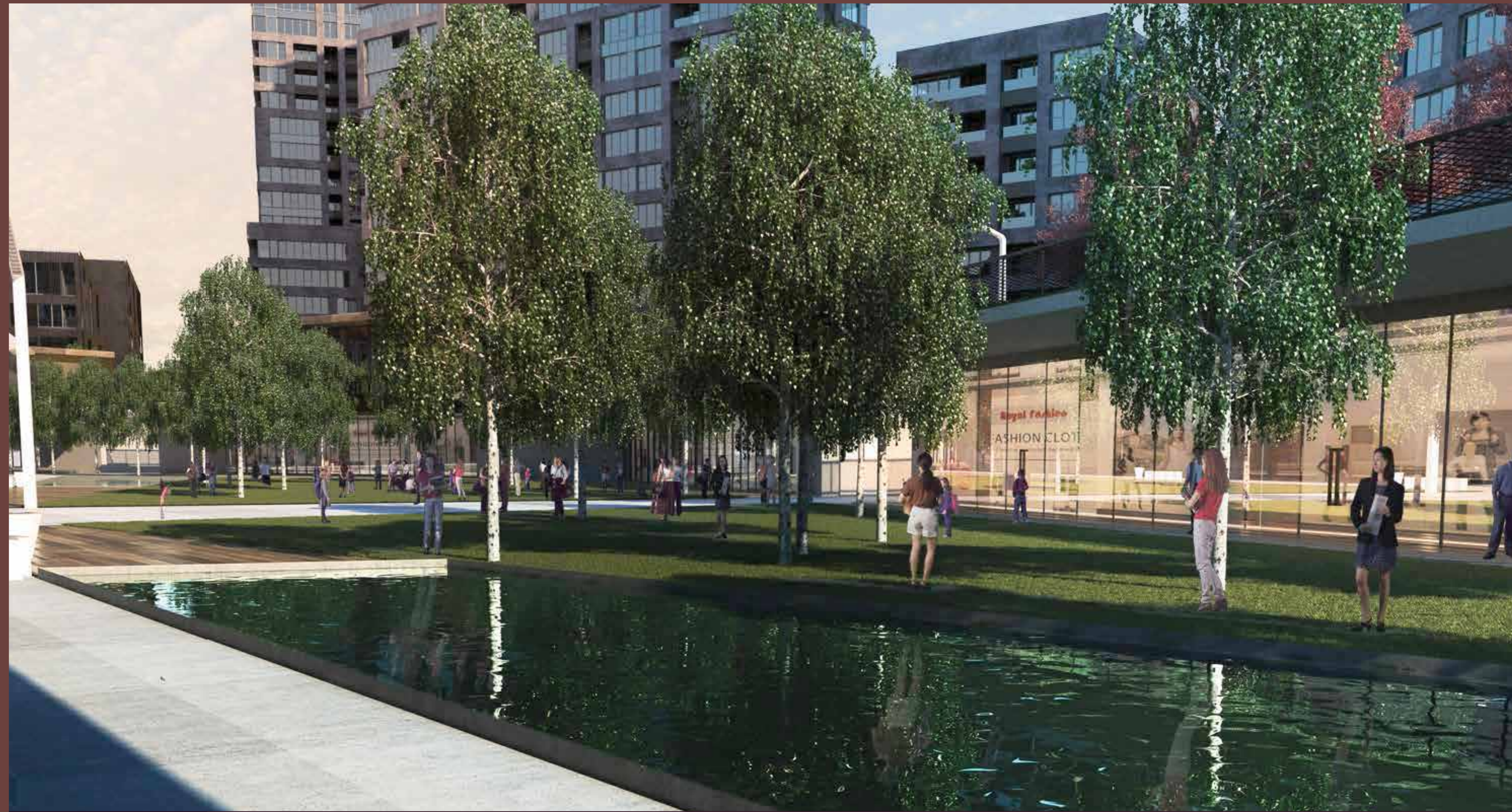




## SHOPPING CENTER

### Shopping Canyon: The closest shopping center.

Public shopping center, which embraces 44 commercial stands and many well-known stores, is just under your house.



# GARDENS



## Please step on the grass.

Incek is number one with its greenery! While your wife makes some shopping, you just lie down on grass and read your book... Moreover 74 different plant species ranging from picea pungens to rose pink and from hedera to cornus mas are waiting for you. You will like spending some time in gardens which have been designed for your comfort and which are more beautiful than the other.



## A life full of oxygen is waiting for you.

The cleanest air area of Ankara is Incek!  
A life full of oxygen is waiting for you in the fresh air of Incek, which has been proved by the certificates received from the reliable environmental laboratories.

WALKING TRACK

New way of exercising.

A walking track of 2 km for fresh air and walking lovers.



FITNESS CENTER

The best fitness center is the one closest to the house.

The center of 240 m<sup>2</sup> embraces lots of sports equipment.



PONY CLUB

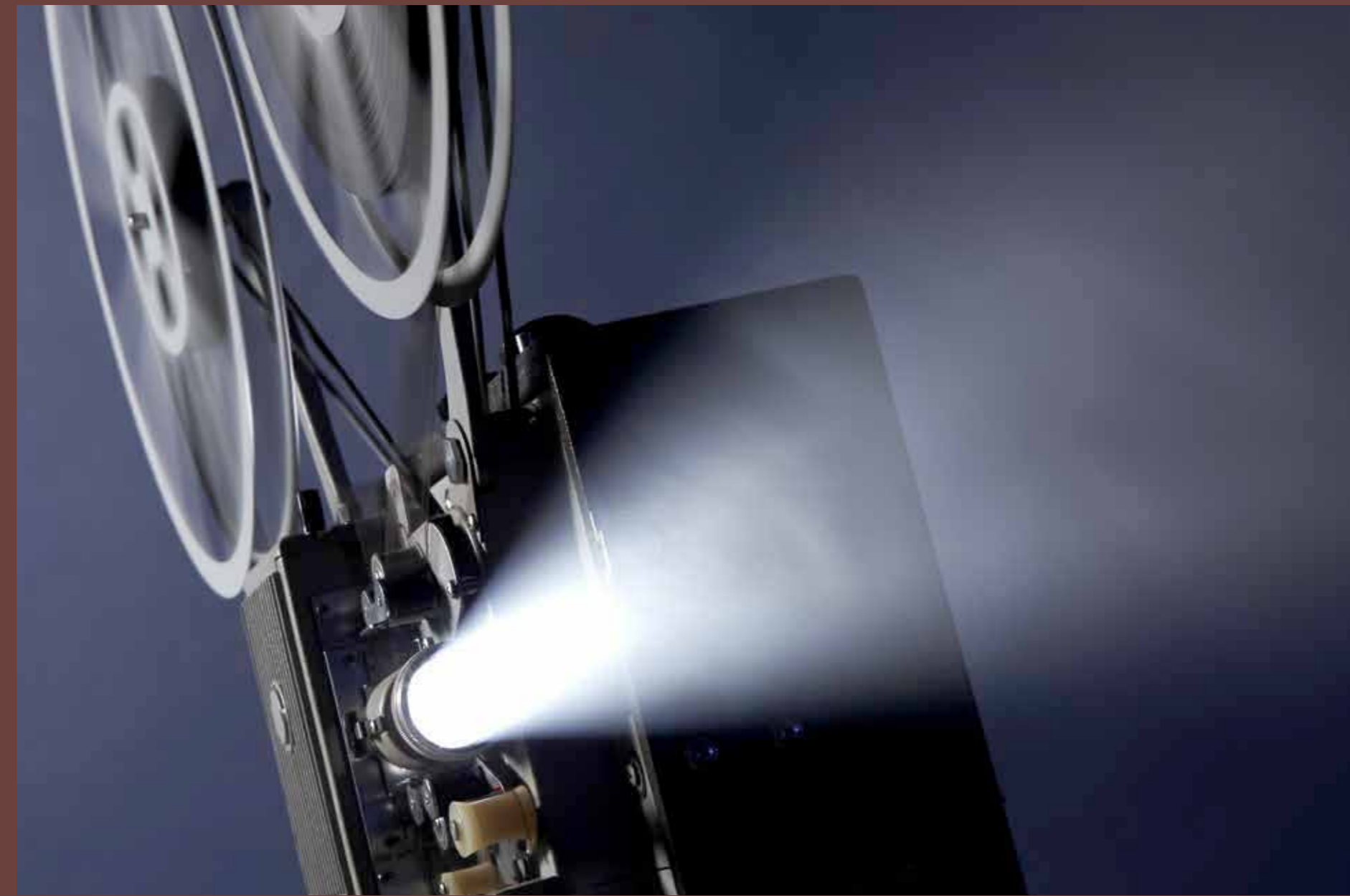
The cutest  
ponies are here.

You will like the cuties ponies in Pony Club  
where your child can learn riding.

MOVIE THEATER

You will determine  
the current movies.

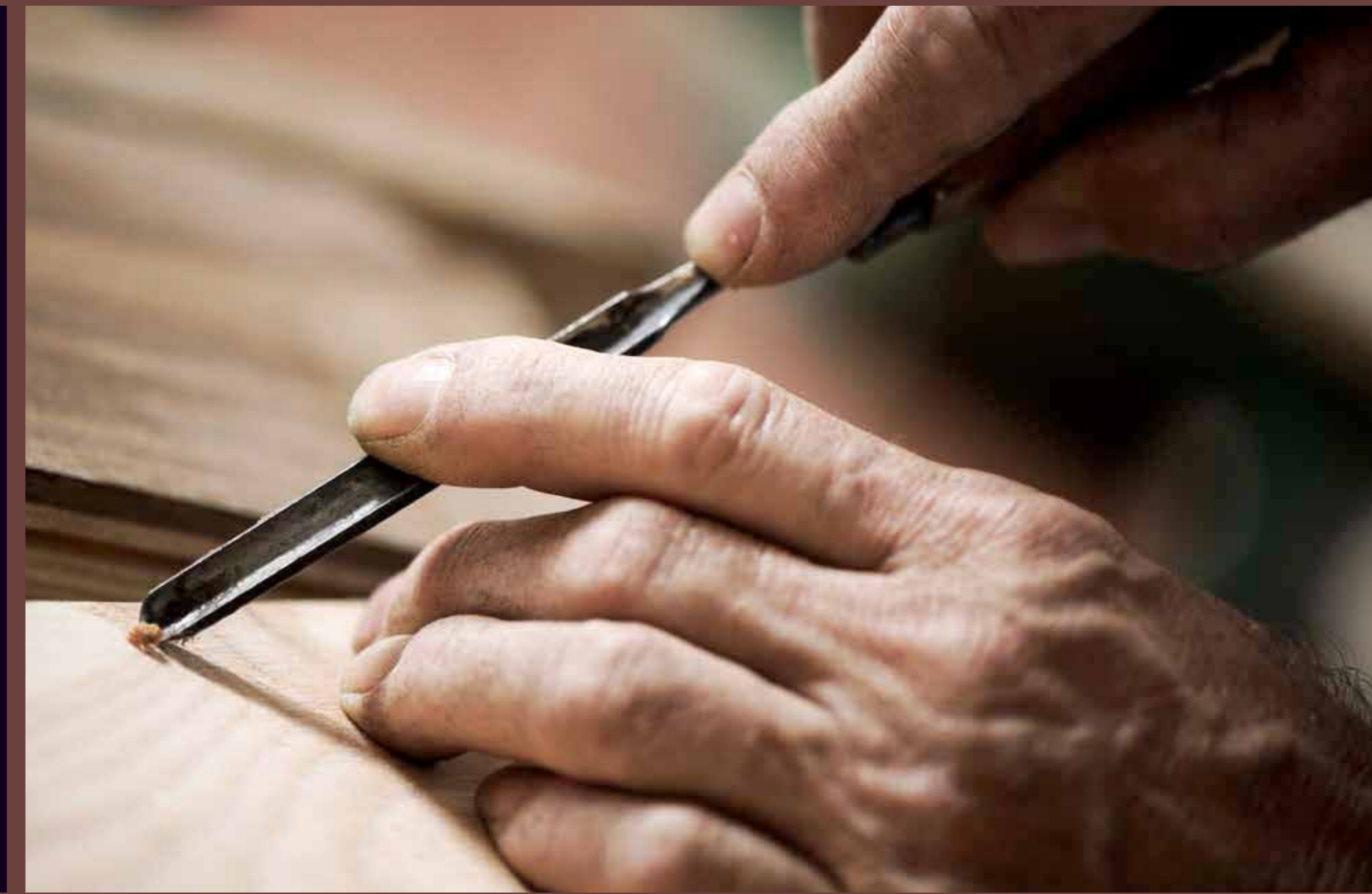
Grab your DVD and join us. Pocket cinema, where you can meet with your friends and watch the movie you like, is waiting for you.



HOBBY WORKSHOP

Your seat is ready.

Photograph, wood painting, wood carving...  
Your seat is ready for all your hobbies.





**LOFT**  
İNCEK



ORGANIC BAZAAR

Naturalness and health is under your house.

You can find fruit and vegetables as well as honey, egg, spices and even cosmetic products in the organic bazaar embracing products coming from special farms.



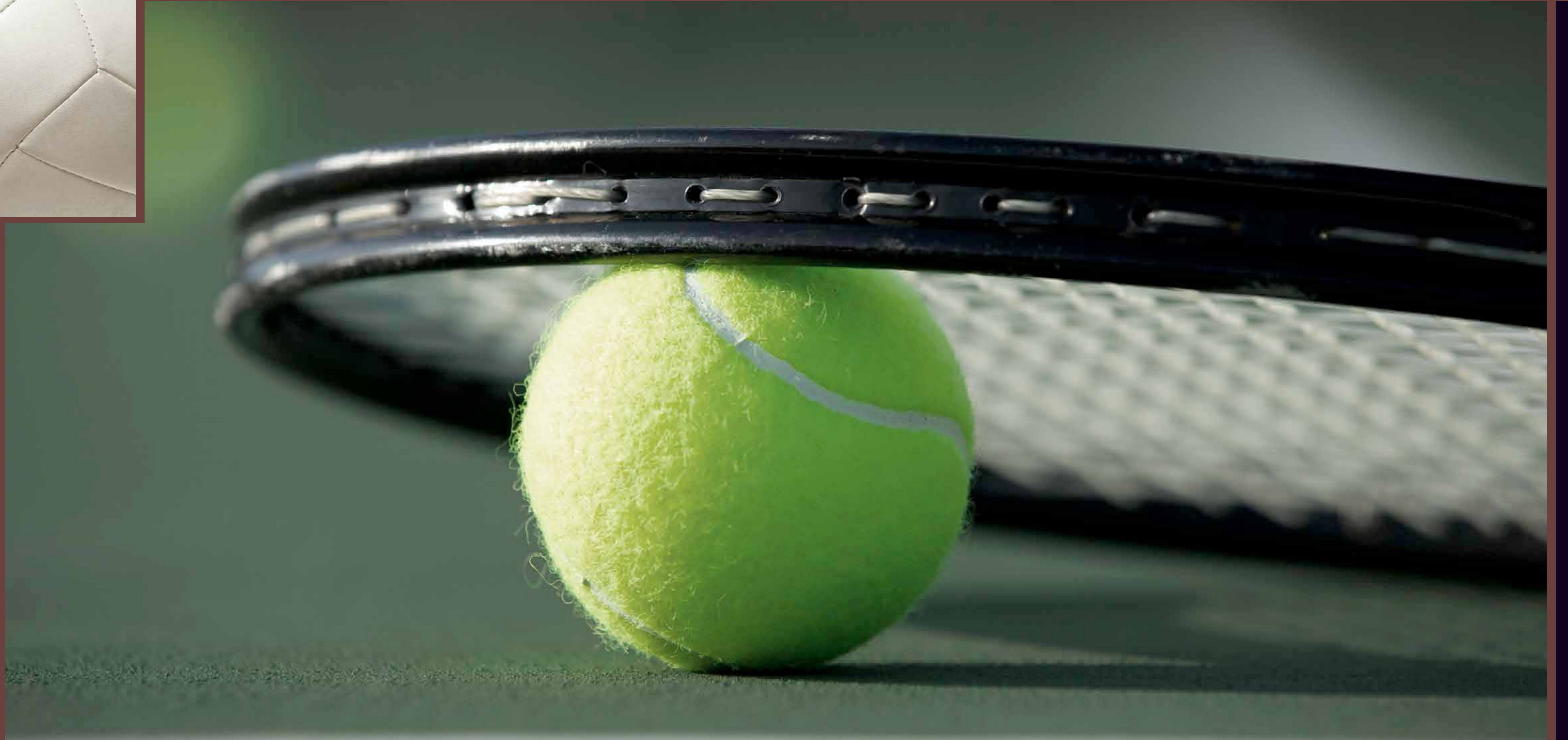
OBSERVATORY

Stars are now much closer.

You will feel yourself adjacent to stars through the telescope available in the professional observatory.



SPORTS COURTS



This is the place of sports lovers.

Whether after work or at weekend... Volleyball, basketball or tennis courts closest to your house are at your service.

INDOOR AND OUTDOOR PLAYGROUND



Imagination develops  
in playgrounds.

You rest your head or make some shopping...  
Your child makes new friends while playing.

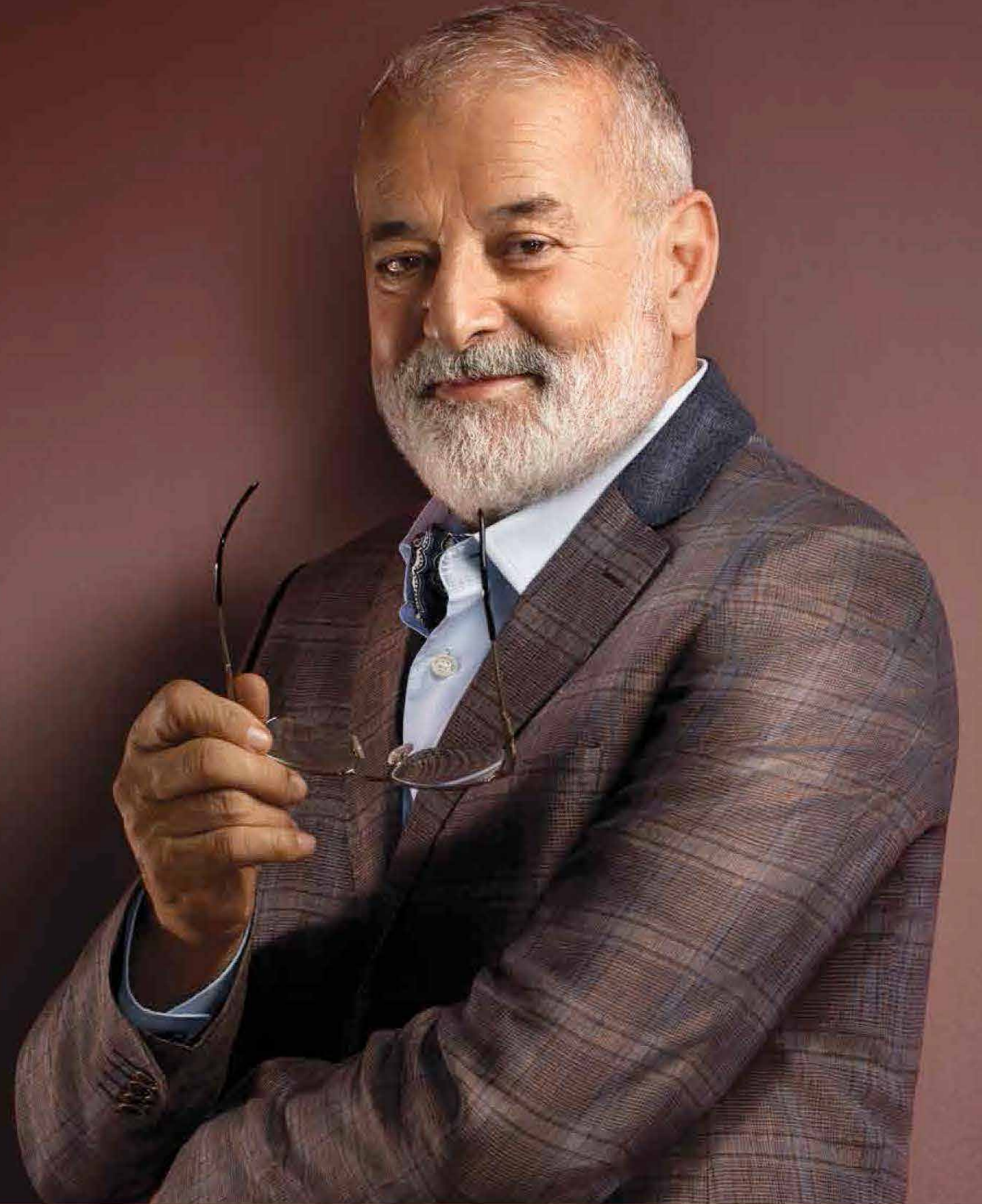
PARTY HOUSE



You will not have to  
struggle to find a place  
for parties.

No messing up your home or throwing a party at home  
anymore. Because there is a party house now. Graduation,  
birthday or friends meeting...  
Your party house is ready for all kinds of entertainments.

LOFT  
İNCEK



◀ If you want to examine this  
catalogue in terms of  
aesthetics, then turn it backwards. ▶